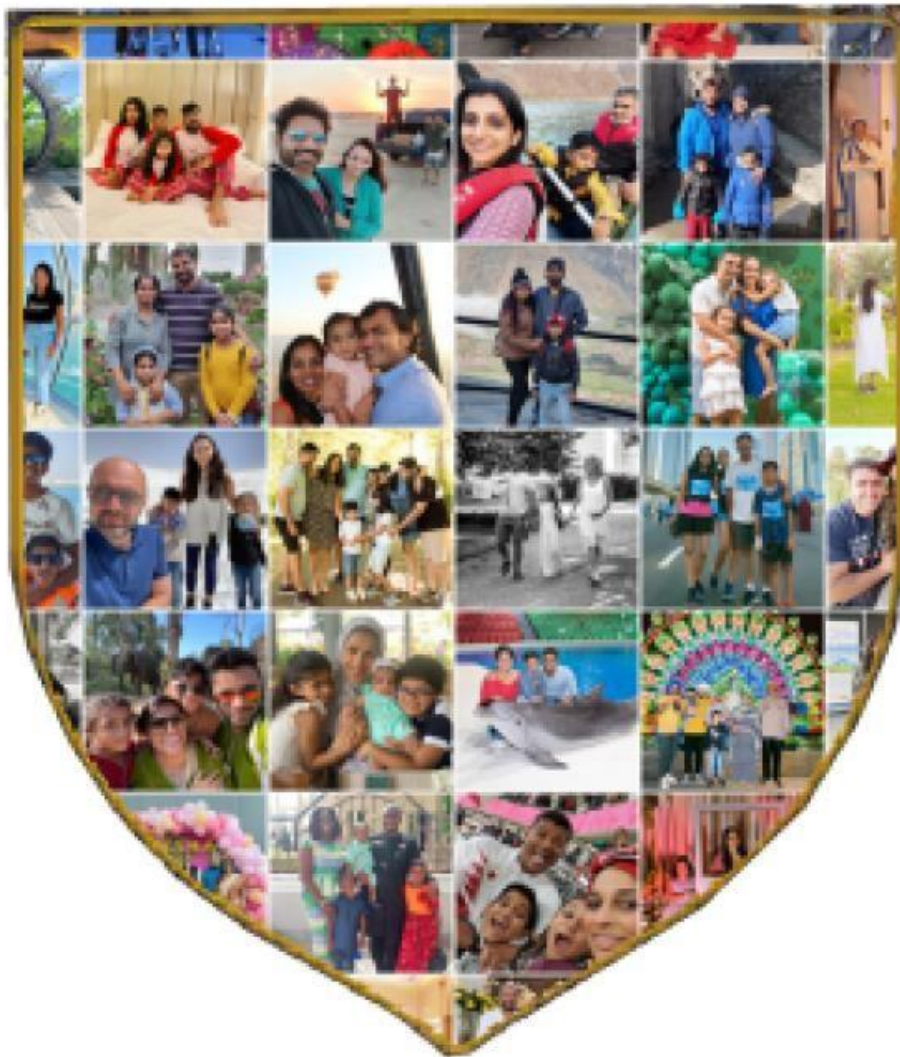




THE CAMBRIDGE HIGH SCHOOL



**PARENT HANDBOOK
2023-2024**



MESSAGE FROM THE PRINCIPAL(2023)

Dear Parents,

As salamu walekum and welcome to the 2023–2024 school year! On behalf of the entire CHS team, I welcome and thank you all for placing your trust in us.



This handbook is meant to provide school information for day-to-day operations. Any suggestions or recommendations for the improvement of this handbook will be appreciated. By working together in a spirit of cooperation, we are committed to achieving our school vision wherein, we will equip all students with the skills and attributes of High Performance, nurturing and supporting them to reach their highest potential and beyond.

Please keep this handbook readily available during the school year. I am sure that it will assist you in answering many questions throughout the year. Any further updates and additional information will be sent to you through email and Phoenix classroom.

Education research clearly validates that parent participation in their child’s school coincides with a greater likelihood of academic success for their child. One of our top priorities is keeping you informed of what is happening at school. Our priority this year continues to be safeguarding, wellbeing and overall excellent success of all our learners. As a High Performance Learning World Class school, our commitment is to provide a safe and nurturing learning environment for all of our learners.

We are committed to creating a conducive learning environment where our learners feel valued, respected, and motivated to learn. You are all an integral partner in the success of our Cambridge learners and we look forward to working with you every step of the way. We at CHS have always believed in upholding high standards with an absolute commitment to strive for excellence, to constantly review our current practices to deliver high quality education for our learners and their families.

Cambridge High School has a strong reputation within Abu Dhabi and the GEMS Education group. We are a very good school, on a journey to becoming outstanding through our prestigious accreditation of High Performance Learning and British School Overseas. As an accredited High Performance Learning World Class school, we have a team of teachers and students who are hardworking and place us at par with the topmost schools across the globe. I, on behalf of the entire team assure you of keeping up with the world class standards and further raising the bar for our students and teachers.

We are fortunate to be blessed with a school full of wonderful, talented and culturally diverse students and staff who have strong and positive relationships, which lead to very positive educational outcomes. At Cambridge High School we not only deliver excellent academics, we support all of our students on their own personal journey to become well rounded global citizens, who will play a part in shaping the future of our world. At GEMS Education, we see genius in every child. I, along with my staff, see it every day in your children, and it is a real privilege.



The mantra through which I continue to believe we can succeed is that of know, like and trust. I believe it is our greatest strength, I want you, and the students, to get to know our staff, in turn, you will like us and, most importantly, you will then trust us to do the very best for your children. The one final thing I want every parent to do is to encourage their child to read for a minimum of 15 minutes every day so that they can develop their language skills, which will lead to better understanding and, ultimately, better outcomes.

Our door is always open at CHS, dialogue is positively encouraged and I want you to feel that you are genuinely part of the CHS 'family'. I look forward to meeting many of you throughout the school year and assure you of my full commitment to leading the school in the best possible way.

Ms. Kuki Tyagi

Principal / CEO



AIMS AND OBJECTIVES OF THE CAMBRIDGE HIGH SCHOOL

- Foster in all of our students a keen interest in learning and in striving for the highest levels of academic achievement.
- Offer a modern and relevant curriculum in line with the National Curriculum for England.
- Help students develop lively, enquiring minds with the ability to question, argue rationally and apply themselves to tasks and physical skills.
- Help students acquire the knowledge and skills relevant to life in a dynamically changing world.
- Help students to use language and life skills effectively and efficiently.
- Instil a respect for moral values.
- Encourage students to be appreciative of and sensitive to different cultures and traditions.
- Provide students with opportunities to develop their skills in both cognitive and affective areas of education.
- Operate a discipline policy that is consistent, fair and firm.
- Maintain frequent and open relations with parents in recognition that education is a partnership.
- Provide students with the care and direction that will encourage personal, social, physical, ethical and academic well-being.
- Encourage all learners and their families to lead healthy, active lifestyles.

SAFEGUARDING AND CHILD PROTECTION

The Cambridge High School, Abu Dhabi is a safe, caring and supportive school, which values praise, enjoyment, respect and honesty in all we do. Our priority is health, safety and well-being of the entire school community and we take our safeguarding and child protection responsibilities very seriously.

We recognise our moral and statutory responsibility to safeguard and promote the welfare of all pupils. We endeavour to provide a safe and welcoming environment where children are respected and valued. We are alert to the signs of abuse and neglect and follow our procedures to ensure that children receive effective support, protection and justice.

Our staff are trained on Safeguarding and Child Protection and are fully aware of their responsibilities to report any concerns they may have to the DSL.

The designated safeguarding lead (DSL) is Nicholas Crafts (Assistant Principal) Contact details: email: n.crafts_chs@gemsedu.com

The deputy designated safeguarding lead is Ryan Howell (Assistant Principal) Contact details: email: r.howell_chs@gemsedu.com

The nominated child protection governor is Shaikh Sarfraz Contact details: email: shaikh.s_l_uis@gemsedu.com

The Principal is Kuki Tyagi
Contact details: email: k.tyagi_l_chs@gemsedu.com



HIGH PERFORMANCE LEARNING at CHS



The 7 Pillars of High Performance

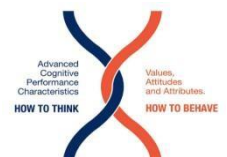


High Performance Learning (HPL), as a set of thinking skills and a set of attitudes, has enabled us as a school to prepare our students for the world beyond school by focusing on the way that we learn, as well as what we learn. Thinking in this way has enabled us to become a better learning community: working together, collaborating, trying new things and, crucially, learning from our mistakes. From confidence, collaboration and risk-taking to agile-thinking, concern for society and perseverance - we ensure our students are prepared for study, work and life.

Neuroscience research has shown that there is not a fixed level of ability amongst young learners, and that the brain is more malleable than once thought. HPL provides a style of learning that removes barriers to achievement, by giving children an opportunity to develop intelligence in their own time. This reflects our long-held belief that there is 'room at the top' for more students than traditional approaches suggest.

As a school, we have always strived to develop both intellectual and social confidence, encouraging students to show concern for others and to prepare for life's challenges. For us, success is not limited to exam results, it is about achieving academic excellence alongside a much wider set of [values and attitudes](#) that sit at the heart of our ethos at The Cambridge High School.

HPL identifies key characteristics and attributes that prepare young people to succeed in learning and in life, and categorises these into **Advanced Cognitive Performance** characteristics (ACPs) and **Values, Attitudes, Attributes** (VAAs).





A High-Performance Learning Toolkit for Parents:

Developing Thinking (ACPs)

Encourage metacognition

"How do you know you're on track?"
"Have you used any strategies before which might be useful now?"
"Can you tell me why you were successful on that task?"
"How could you break this task into chunks?"

Encourage linking

"Where have you seen this sort of thing before?"
"How might someone else see this differently?"
"Is there a bigger picture here?"
"Do your other subjects help here?"

Encourage analysing and critical thinking

"Why do you think that happened?"
"How could you work this out?"
"Could you explain that to me?"

Encourage creative thinking and curiosity

"What would happen if...?"
"Is there a different way of looking at this?"
"I wonder why ...?"
"I wonder how...?"
"What if...?"

Developing Behaviours (VAAs)

Encourage resilience

"I know it's hard now; you can do this if you keep trying."
"You can't expect to always understand it first time."
"Don't get flustered: what do you know that could help you here?"

Encourage risk taking and open mindedness

"Is there another way of doing this?"
"What's the worst that could happen?"
"Can you apply a different set of criteria to this problem?"

Encourage collaboration

"Would working with a friend help both of you?"
"Could you explain this to me?"

Encourage empathy

"How might people in a different culture see this problem?"
"What would you say to someone who disagreed with you about this?"
"How could you help somebody you know?"

Encourage practice and confidence

"You're really good at that now, what's the next step?"
"Don't worry if you don't get it first time...have another go."
"What an interesting idea!"
"I would never have thought of that – well done!"



High
Performance
Learning

World Class School



GEMS CORE VALUES



ALWAYS LEARNING

My open minded curiosity fuels my love for learning. I ask questions & listen so that I continuously learn & improve.



CARE

I respect the needs of my stakeholders. I will ensure they feel listened to and cared for.



EXCELLENCE

I dream big, setting ambitious goals, aiming to be the best at what I do.



ONE TEAM

I am a team player. I work with the bigger picture in mind. I put the team's needs ahead of my own.



2023/2024 TERM DATES (Updated 28th August 2023)

Term 1

Monday 28th August 2023 to Friday 08th December 2023

Half Term Break

Monday 16th October 2023 to Friday 20th October 2023

Winter Break

Monday 11th December 2023 to Monday 01st January 2024

Term 2

Monday 02nd January 2024 to Friday 22nd March 2024

Half Term Break

Monday 19th February 2024 to Wednesday 21st February 2024

Spring Break

Monday 25th March 2024 to Monday 8th April 2024

Term 3

Monday 15th April 2024 to Friday 05th July 2024

Summer Break

Break up on Friday 05th July 2024

Parents will be informed of the dates of the Eid holiday when it is announced by the relevant authorities

Please do not take your children out of school outside of Term dates without prior written permission from the Director of Key Stage/or Vice Principal

ADEK APPROVED ACADEMIC CALENDAR for 2023 – 2024 - <https://www.gemscis-abudhabi.com/About-Us/Academic-Calendar>



THE SCHOOL DAY

School now starts at 7.45am with form time; the UAE National Anthem will be played during form time and lessons will start at 8.00am.

It is absolutely essential that your child is in form, on time, every day as vital information for the day ahead is often communicated by the form teacher.

There will be 2 breaks per day on Monday through Thursday, and one break on Friday for all learners. The first break, in the morning, is 25 minutes duration and the second break, in the afternoon, is 20 minutes duration. The break on a Friday will be 20 minutes. The longer break times than in term 1 allows more time for children to eat and to relax and socialize with their friends (at a social distance). Staff will be on duty throughout the duration of the break.

Primary School Timings

| Primary – Monday - Thursday | |
|------------------------------------|--------------------|
| Time | Form/Lesson |
| 07:45am – 08:00am | Form |
| 08:00am – 08:50am | Lesson 1 |
| 08:50am – 09:40am | Lesson 2 |
| 09:40am – 10:05am | Break |
| 10:05am – 10:55am | Lesson 3 |
| 10:55am – 11:45am | Lesson 4 |
| 11:45am – 12:35pm | Lesson 5 |
| 12:35pm – 12:55pm | Break |
| 12:55pm – 13:45pm | Lesson 6 |
| 13:45pm – 14:35pm | Lesson 7 |

| Primary – Friday | |
|-------------------------|--------------------|
| Time | Form/Lesson |
| 07:45am – 08:00am | Form |
| 08:00am – 08:50am | Lesson 1 |
| 08:50am – 09:40am | Lesson 2 |
| 09:40am – 10:00am | Break |
| 10:00am – 10:50am | Lesson 3 |
| 10:50am – 11:40am | Lesson 4 |



Secondary School Timings

| Secondary – Monday - Thursday | |
|--------------------------------------|--------------------|
| Time | Form/Lesson |
| 07:45am – 08:00am | Form |
| 08:00am – 08:50am | Lesson 1 |
| 08:50am – 09:40am | Lesson 2 |
| 09:40am – 10:30am | Lesson 3 |
| 10:30am – 10:55am | Break |
| 10:55am – 11:45am | Lesson 4 |
| 11:45am – 12:35pm | Lesson 5 |
| 12:35pm – 13:25pm | Lesson 6 |
| 13:25pm – 13:45pm | Break |
| 13:45pm – 14:35pm | Lesson 7 |

| Secondary – Friday | |
|---------------------------|--------------------|
| Time | Form/Lesson |
| 07:45am – 08:00am | Form |
| 08:00am – 08:50am | Lesson 1 |
| 08:50am – 09:40am | Lesson 2 |
| 09:40am – 10:30am | Lesson 3 |
| 10:30am – 10:50am | Break |
| 10:50am – 11:40am | Lesson 4 |



ATTENDANCE and PUNCTUALITY

| Rating | % |
|-------------|-------------|
| Outstanding | Above 98% |
| Very Good | 96.1% - 98% |
| Good | 94.1% - 96% |
| Acceptable | 92.1% - 94% |
| Weak | 90.1% - 92% |
| Very Weak | Below 90% |

A student's parents are fully responsible for ensuring the highest levels of attendance possible and not less than 97%.

ATTENDANCE

182 school days this AY (2023/24)

- **95% Attendance** = Missed 9 school days (nearly 2-weeks of learning)
- ***90% Attendance** = Missed 18 school days (nearly 4-weeks of learning) If a child's
 - attendance drops by 10 per cent, that equates to dropping a grade at IGCSE
- **85% Attendance** = Missed 27 school days (nearly 6-weeks of learning)
- **80% Attendance** = Missed 36 school days (nearly 8-weeks of learning – ALL of Half-Term 1 + 1-day)

PUNCTUALITY

- 10 lates of 5-minutes in 1 term = 1 whole lesson of lost learning/information
- We will initially have systems in place to support the arrival of students to school.
- Additionally, the staff on hand to support will challenge and record late arrivals through a supportive and educational approach – for example “By missing the first 5-minutes of school this has a disruptive impact on the teaching & learning taking place, as well as your child's start to the school day”.
- Persistent lateness arriving to school will be escalated to Director of Key Stage and/or SLT



EXECUTIVE LEADERSHIP TEAM

- Kuki Tyagi – Principal (k.tyagi_chs@gemsedu.com)
- Kim Teakle-May – Vice Principal (k.teaklemay_chs@gemsedu.com)
- Nick Crafts – Assistant Principal (n.crafts_chs@gemsedu.com)
- Ryan Howell – Assistant Principal (r.howell_chs@gemsedu.com)

SCHOOL MIDDLE LEADERSHIP TEAM

- Director of MoE Subjects & Head of Arabic B: Qusay Eid – q.eid_chs@gemsedu.com
- Head of Arabic A: Hagier Hussein - h.hussein_chs@gemsedu.com
- Head of Arabic B: Ahmed Mohamed – a.mohamed40_chs@gemsedu.com
- Head of UAE Social Studies A/B and National Identity Co-Ordinator: Asma Rashed - a.rashed_chs@gemsedu.com
- Director of Inclusion: Zaina Abdalnaser Zaher – z.zaher_chs@gemsedu.com
- Director of Key Stage EYFS: Britney Washington – b.washington_chs@gemsedu.com
- Director of Year 1, 2 and 3: Anne Marie de Beer- a.debeer_chs@gemsedu.com
- Director of Year 4, 5, 6 and Director of HPL Whole School: Willem Esterhuyse - w.esterhuyse_chs@gemsedu.com
- Director of Key Stage 3: Cony Alphonso - calphonso_chs@gemsedu.com
- Director of Key Stage 4: Jelena Marijan – j.marijan_chs@gemsedu.com
- Director of Key Stage 5 / Sixth Form: Ryan Howell - r.howell_chs@gemsedu.com
- Head of Year 1: Shalina Kumar – s.kumar_chs@gemsedu.com
- Head of Year 2: Jyotsna Tripathi - j.tripathi_chs@gemsedu.com
- Head of Year 3: Mia Esterhuyse – m.esterhuyse_chs@gemsedu.com
- Head of Year 4: Joshua Lakey– j.lakey_chs@gemsedu.com
- Head of Year 5: Joseph Isaac – j.isaac_chs@gemsedu.com
- Head of Year 6: Fazia Chaudhary – f.chaudhary_chs@gemsedu.com
- Head of Year 7: Reema Cardoza - r.cardoza_chs@gemsedu.com
- Head of Year 8: TBC
- Head of Year 9: Dalia Gahin: d.gahin_chs@gemsedu.com
- Head of Year 10: Anu Muthalaly – a.muthalaly_chs@gemsedu.com
- Head of Year 11: Soma Dutta – Email Id to be confirmed
- Head of Year 12: Eiman Ticklay – e.ticklay_chs@gemsedu.com
- Head of Year 13: Azra Noorulla – n.noorulla_chs@gemsedu.com
- Primary Curriculum Leader Maths and Science: Brankica Stevanovic - b.stevanovic_chs@gemsedu.com
- Primary Curriculum Leader English: Kim Teakle-May - k.teaklemay_chs@gemsedu.com
- Director of Phonics - Britney Washington – b.washington_chs@gemsedu.com
- Director of English: Shameela Khan - s.khan6_chs@gemsedu.com
- Director of Maths: Gabriela Silcau - g.silcau_chs@gemsedu.com
- Deputy Director of Maths: Kiruba Rejini - k.rejini_chs@gemsedu.com



مدرسة كامبردج الثانوية
THE CAMBRIDGE HIGH SCHOOL, ABU DHABI

- Director of Science: Siddhanta Chettri – s.chettri_chs@gemsedu.com
- Deputy Director of Science: Joseph Mezher - j.mezher_chs@gemsedu.com
- Director of Business/Humanities: Bernard Armand Beukes - b.beukes_chs@gemsedu.com
- Director of ICT, Innovation & Standards: Frithi Francis - f.antony_chs@gemsedu.com
- Data Manager & Examinations Officer: Frincy Francis - f.francis_chs@gemsedu.com
- Data Manager: Frinson Francis - f.frinson_chs@gemsedu.com



SCHOOL ADMINISTRATION TEAM

Parents can contact school via email on reception_chs@gemsedu.com or by phone on 02 552 1621 for any general enquiries.

For specific enquiries please contact any of the below staff / departments.

- Registrar: Anu Sreekumar (a.sreekumar_chs@gemsedu.com)
- Admissions Secretary: Janice D Souza (j.dsouza_chs@gemsedu.com)
- Parent Relations Executive: Nesma Ahmed (n.ahmed1_chs@gemsedu.com)
- Government Relations Executive: Asma Haj (a.haj_chs@gemsedu.com)
- Accounts Department: finance_chs@gemsedu.com
- Student reports and GEMS Connect Credentials: Frinson Francis (f.frinson_chs@gemsedu.com)
- Exams: Frincy Francis (f.francis_chs@gemsedu.com)
- School Social Worker: Babitha Joy (b.joy_chs@gemsedu.com)
- Student Counsellor: Lizil Johnson (l.johnson_chs@gemsedu.com)
- School Nurses: (nurse_chs@gemsedu.com)

If you wish to make an appointment with the Principal then please contact the Executive Secretary, Neethu Anzar - a.anzar_chs@gemsedu.com

SCHOOL FEE PAYMENTS

For any fee payment enquiries please contact the accounts department (finance_chs@gemsedu.com) School fees can be paid

in the following ways;

- Online payment can be made via GEMS Connect App or through the GEMS Connect Website.
- Please click on the link <https://oasis.gemseducation.com/> for online payment.
- Fees can be paid by bank transfer to our account, details below; Account Name:

The Cambridge High School

Bank Name: MASHREQ BANK
Bank Address: P O Box No. 5511, Dubai
Account Number: 0493139070
Swift Code: BOMLAEAD
IBAN: AE 170330000010493139070



PRIMARY HOMEROOM and FORM TUTORS 2023/2024

In school, each section has a homeroom or form tutor who is the initial point of contact for both student and parent. The teacher named below for your child's section will contact you each month as part of our Pulse engagements to check that everything is ok. Please feel free to reach out to the homeroom/form tutor if there are any issues you wish to discuss. You can use Seesaw in primary and/or the email ID reception_chs@gemsedu.com or communication_chs@gemsedu.com and your query will be directed to the right person.

EYFS Homeroom Teachers (FS2 and Year 1)

| | | | | |
|-----|---|--|-----|--|
| FS2 | A | Jessa Mae Andres | JMA | j.andres_chs@gemsedu.com |
| | B | Cornelia Bernhard | CBE | c.bernhard_chs@gemsedu.com |
| | C | Britney Washington | BWA | b.washington_chs@gemsedu.com |
| | D | Bedoor Abdulbaset Mohamed Alyas Alshehhi | BEA | b.alshehhi_chs@gemsedu.com |
| | E | Socorro Mendoza | SME | s.mendoza_chs@gemsedu.com |
| | F | Madisson Mellish | MME | |

| | | | | |
|--------|---|---|-----|--|
| Year 1 | A | Asma Mohamed Mustafa | AMM | a.mustafa_chs@gemsedu.com |
| | B | Ayesha Mohammed Abdulrahman Ahmed Aldarmaki | AYM | a.aldarmaki_chs@gemsedu.com |
| | C | Shalini Kumar | SKU | s.kumar2_chs@gemsedu.com |
| | D | Shahanie Durga | SDU | s.durga_chs@gemsedu.com |
| | E | Jennifer Ruth Evasco | JER | j.evasco_chs@gemsedu.com |

Homeroom Teachers (Year 2, Year 3 and Year 4)

| | | | | |
|--------|---|------------------|-----|--|
| Year 2 | A | Mary Gonsalvez | MGO | m.gonsalvez_chs@gemsedu.com |
| | B | Jyotsna Tripathi | JTR | j.tripathi_chs@gemsedu.com |
| | C | Esther Okwara | EOK | e.okwara_chs@gemsedu.com |
| | D | Shalina Hassin | SAH | s.kumar2_chs@gemsedu.com |
| | E | Friya Francis | FFI | f.friya_chs@gemsedu.com |

| | | | | |
|--------|---|------------------|-----|--|
| Year 3 | A | Sheldene Scholtz | SSC | s.scholtz_chs@gemsedu.com |
| | B | Angela Suzanne | ASU | a.matilla_chs@gemsedu.com |
| | C | Mia Esterhuyse | MES | m.esterhuyse_chs@gemsedu.com |
| | D | Mumtaz Banu | MBA | m.banu_chs@gemsedu.com |
| | E | Sadaf Siddiqui | SAS | s.siddiqui1_chs@gemsedu.com |

| | | | | |
|--------|---|------------------|-----|--|
| Year 4 | A | Idris Siddiq | ISI | i.siddiq_chs@gemsedu.com |
| | B | Migi Tomy | MTO | m.tomy_chs@gemsedu.com |
| | C | Lelan Washington | LWA | l.washington_chs@gemsedu.com |
| | D | Merrin Bhupesh | MBH | m.bhupesh_chs@gemsedu.com |
| | E | Joshua Lakey | JLA | j.lakey_chs@gemsedu.com |



Upper Primary Form Tutors (Year 5 and Year 6)

| | | | | |
|--------|---|-----------------|-----|---------------------------|
| Year 5 | A | Joseph Isaac | JIS | j.isaac_chs@gemsedu.com |
| | B | Shahana Sherin | SHS | s.k20_chs@gemsedu.com |
| | C | Priyanka Jha | PJH | p.jha_chs@gemsedu.com |
| | D | Blessy Matthews | BMA | b.mathews_chs@gemsedu.com |
| | E | Lina Safa | LSA | l.safa_chs@gemsedu.com |

| | | | | |
|--------|----|---------------------|-----|------------------------------|
| Year 6 | B1 | Deepthi Chandola | DCH | d.chandola_chs@gemsedu.com |
| | B2 | Faiza Chaudhary | FCH | f.chaudhary_chs@gemsedu.com |
| | G1 | Brankica Stevanovic | BST | b.stevanovic_chs@gemsedu.com |
| | G2 | Rizvi Nazia Abbas | RNA | r.abbas_chs@gemsedu.com |
| | G3 | Anita Roy | ARO | r.anita_chs@gemsedu.com |

SECONDARY FORM TUTORS 2023/2024

Form Tutors (Year 7, Year 8 and Year 9)

| | | | | |
|--------|----|---------------------|-----|---------------------------|
| Year 7 | B1 | Christian De Beer | CDB | j.debeer_chs@gemsedu.com |
| | B2 | Mohammad Azeem Baig | MAB | m.baig_chs@gemsedu.com |
| | B3 | Retheesh Abraham | RAB | r.abraham_chs@gemsedu.com |
| | G1 | Reema Cardoza | RCA | r.cardoza_chs@gemsedu.com |
| | G2 | Rim Soliman | RSO | r.soliman_chs@gemsedu.com |

| | | | | |
|--------|----|-----------------|-----|-----------------------------|
| Year 8 | B1 | Arsala Ali | AAL | a.ali2_chs@gemsedu.com |
| | B2 | Antonio Humiwat | AHU | a.humiwat_chs@gemsedu.com |
| | G1 | Nilav Sebastien | NSE | n.sebastian_chs@gemsedu.com |
| | G2 | Julie Mullins | JMU | j.mullins_chs@gemsedu.com |

| | | | | |
|--------|----|-------------------|-----------|---|
| Year 9 | B1 | Nishaat Aftab | NAF | n.aftab_chs@gemsedu.com |
| | B2 | Nachammai Muthu | NAM | n.muthu_chs@gemsedu.com |
| | G1 | Melanie Reeve | MRE | m.reeve_chs@gemsedu.com |
| | G2 | Olaf / Alaa Tarek | OGO / ATS | o.gomez1_chs@gemsedu.com, a.hassan_chs@gemsedu.com |



Form Tutors (Year 10 and Year 11)

| | | | | |
|---------|----|----------------------|-----|-----------------------------|
| Year 10 | B1 | Soumyajit Choudhary | SCH | s.choudhary_chs@gemsedu.com |
| | B2 | Selwyn Jovan Present | SPR | s.present_chs@gemsedu.com |
| | G1 | Kiruba Rejini | KRE | k.rejini_chs@gemsedu.com |
| | G2 | Anu Muthalaly | AMU | a.muthalaly_chs@gemsedu.com |

| | | | | |
|---------|----|----------------------|-----|---------------------------|
| Year 11 | B1 | Mario Ross | MRO | c.ross_chs@gemsedu.com |
| | B2 | Krishnapriya Sonuraj | KSO | k.sonuraj_chs@gemsedu.com |
| | G1 | Soma Dutta | SDA | TBC |
| | G2 | Jenny McGee | JLM | j.lyn_chs@gemsedu.com |

Sixth Form Tutors (Year 12 and Year 13)

| | | | | |
|---------|----|--------------------|-----|-----------------------------|
| Year 12 | B1 | Eiman Ticklay | ETI | e.ticklay_chs@gemsedu.com |
| | B2 | Hajira Ahmed | HAH | h.tasneem_chs@gemsedu.com |
| | G1 | Susan Mary Gilbert | SGI | s.gilbert_chs@gemsedu.com |
| | G2 | Prabu Nainappan | PNA | p.nainappan_chs@gemsedu.com |
| | G3 | Sana Danish | SDH | s.danish_chs@gemsedu.com |

| | | | | |
|---------|----|---------------------------|---------|--|
| Year 13 | B1 | Joseph Mezher/ Syed Nasir | JOM/SNR | j.mezher_chs@gemsedu.com / s.hussainrazvi_chs@gemsedu.com |
| | B2 | Azra Noorulla | ANO | a.noorulla_chs@gemsedu.com |
| | G1 | Sabeena Anjum | SHU | s.ahmedhussain_chs@gemsedu.com |
| | G2 | Nasreen Taj | NHA | h.taj_chs@gemsedu.com |



Extra-Curricular Activities (ECA's)

Engaging in Extra-Curricular Activities (ECA's) here at CHS can provide a wide range of benefits for our students. These activities are those that fall outside the scope of regular academic curriculum but contribute to personal, social, and skill development. Here are some of the benefits of participating in ECA's:

- 1. Skill Development:** ECA's often focus on specific skills that may not be covered in regular classroom settings. Whether it's playing a musical instrument, participating in a sport, or joining a debate club, these activities help students develop new talents and abilities.
- 2. Time Management:** Balancing academics and ECA's requires effective time management. Students who engage in such activities learn to allocate time efficiently, enhancing their organizational skills and ability to meet deadlines.
- 3. Personal Growth:** ECA's can contribute to personal growth by boosting self-confidence and self-esteem. Overcoming challenges and achieving success in activities outside academics can positively impact one's self-perception.
- 4. Leadership Skills:** Many ECA's offer opportunities for leadership roles, whether as team captains, club presidents, or event organizers. These roles help individuals develop leadership skills, including decision-making, problem-solving, and teamwork.
- 5. Social Interaction:** Participating in ECA's provides a chance to meet and interact with peers who share similar interests. This can lead to the formation of lasting friendships and the development of strong social skills.
- 6. Networking Opportunities:** ECA's often involve interactions with individuals from different backgrounds and experiences. This expands a person's social network, which can be valuable for future personal and professional endeavors.
- 7. Reduced Stress:** Engaging in activities that one enjoys can serve as a stress reliever. These activities provide a break from academic pressures and offer a way to unwind and recharge.
- 8. Exploration of Interests:** ECA's enable students to explore a variety of interests that may not be covered in their regular studies. This exploration can help them discover new passions and potential career paths.
- 9. Enhanced Resumes and College Applications:** Participation in ECA's can make a student's resume or college application stand out. Admissions committees often look for well-rounded individuals who are involved in diverse activities beyond academics.
- 10. Cultural and Global Awareness:** Activities like language clubs, cultural clubs, and international exchange programs expose individuals to different cultures, traditions, and perspectives, fostering a broader worldview.
- 11. Physical Health:** Sports and physical activities are common ECA's options. Engaging in these activities promotes physical fitness and a healthy lifestyle.
- 12. Creative Expression:** Activities such as art, drama, and writing clubs provide an outlet for creative expression, allowing individuals to showcase their talents and imagination.

It's important to note that while ECA's offer numerous benefits, balance is key. Overcommitting to too many activities can lead to burnout and negatively impact academics. It's advisable to choose a few activities that align with personal interests and goals and manage time effectively to reap the most benefits from them.

All ECA's will be communicated each Term, please keep up to date with these communications so you can sign your children up to the enriching activities here at CHS.



Uniform Policy

Purpose

GEMS The Cambridge High School, Abu Dhabi, believes in the importance of a school uniform. The uniform is the visible sign of belonging to GEMS CHS and it should be worn with pride. The local community recognises the uniform and it is therefore extremely important that all members of the school present themselves in a positive and well-ordered way.

By requiring students to wear the school uniform it is intended to develop a sense of loyalty to the learning community to which they belong, as well as prepare students for life after school whereby professional attire and standards will be expected whatever sector the aspire to work in.

GEMS The Cambridge High School uniform is provided by *Threads* Uniform Supplier, located in Capital Mall, Mussafah.

For opening times and further information,
please call **800-8473237**

GEMS The Cambridge High School, Abu Dhabi Uniform Expectations - *Threads* Visuals

School Uniform

THE CAMBRIDGE HIGH SCHOOL - CHS

| | | | |
|--|---|---|--|
| <p>CORE UNIFORM FS1 - Y1</p> <p>UNISEX</p> <p>POLO SHIRTS NAVY TRACK PANT</p> <p>RED GREEN</p> <p>POLO SHIRTS NAVY SHORTS</p> <p>YELLOW BLUE</p> <p>HOUSE COLOURS WHITE SOCKS</p> <p>RED GREEN BLUE YELLOW</p> <p>HAWKS KESTRELS FALCONS EAGLES</p> <p>SCHOOL BAGS WITH LOGO LEGIONNAIRE CAP BOOK BAG</p> <p>12 INCHES BAG 12 x 15 inches</p> | <p>CORE UNIFORM Y3 - Y9</p> <p>BOYS</p> <p>SHORT/LONG SLEEVES SHIRTS BELT</p> <p>BURGUNDY TIES</p> <p>Clip on Tie Full Tie</p> <p>NAVY-BLACK SOCKS Y3 to Y5 Y6 to Y9 GREY TROUSER</p> <p>SCHOOL BAGS WITH LOGO BURGUNDY BAG</p> <p>16 INCHES 18 INCHES 16 & 18 INCHES</p> | <p>CORE UNIFORM Y10 - Y13</p> <p>BOYS</p> <p>SHORT/LONG SLEEVES SHIRTS BURGUNDY FULL TIE Y10 TO Y11 STRIPED FULL TIE Y12 Y13</p> <p>NAVY-BLACK SOCKS GREY TROUSER</p> <p>SCHOOL BAGS WITH LOGO BURGUNDY BAG</p> <p>16 INCHES 18 INCHES 16 & 18 INCHES</p> | <p>PE & WINTERWEAR ALL YEARS</p> <p>UNISEX</p> <p>POLO SHIRTS - ALL YEARS NAVY TRACK PANT</p> <p>RED GREEN</p> <p>POLO SHIRTS NAVY SHORTS</p> <p>YELLOW BLUE</p> <p>HOUSE COLOURS WHITE SOCKS</p> <p>RED GREEN BLUE YELLOW</p> <p>HAWKS KESTRELS FALCONS EAGLES</p> <p>PULLOVER JACKET LEGIONNAIRE CAP & BASEBALL</p> <p>F51 to F52 F3 to Y13</p> |
| <p>CORE UNIFORM YEAR 2</p> <p>GIRLS</p> <p>SHORT/LONG SLEEVES BLOUSE SCRUNCHIE</p> <p>STRIPED DRESS BURGUNDY TIGHTS WHITE SOCKS HAIR BAND</p> <p>BOYS</p> <p>CREAM POLO SHIRT GREY TROUSERS NAVY-BLACK SOCKS</p> <p>SCHOOL BAGS WITH LOGO LEGIONNAIRE CAP BOOK BAG</p> <p>16 INCHES 18 INCHES 12 x 15 inches</p> | <p>CORE UNIFORM Y3 - Y9</p> <p>GIRLS</p> <p>SHORT/LONG SLEEVES BLOUSE BELT</p> <p>PAPYRUS HEAD SCARF TROUSER OPTIONAL READY MADE</p> <p>KNEE SKIRT</p> <p>WHITE SOCKS CROSSOVER TIE SCRUNCHIE & HAIR BAND</p> <p>SCHOOL BAGS WITH LOGO BURGUNDY BAG</p> <p>16 INCHES 18 INCHES 16 & 18 inches</p> | <p>CORE UNIFORM Y10 - Y13</p> <p>GIRLS</p> <p>SHORT/LONG SLEEVES BLOUSE BELT</p> <p>PAPYRUS HEAD SCARF TROUSER OPTIONAL READY MADE</p> <p>KNEE SKIRT</p> <p>WHITE SOCKS NECK SCARF Y10-Y11 Y12 Y13 BURGUNDY BAG</p> <p>SCHOOL BAGS WITH LOGO Y3 - Y11 Y12 Y13</p> <p>16 INCHES 18 INCHES 16 & 18 inches</p> | <p>SWIMWEAR BOYS & GIRLS</p> <p>SWIMSUIT BLACK</p> <p>JAMMER BLACK SHORTS BLACK</p> <p>SILICON CAP</p> <p>Red Green Blue Yellow Burgundy</p> |

www.threadsme.com
800-THREADS(8473237)

GEMS The Cambridge High School, Abu Dhabi P.E Expectations - *Threads* Visuals

P.E Kit



CORE UNIFORM

FS1 - Y1

UNISEX

POLO SHIRTS



RED

POLO SHIRTS



GREEN

NAVY TRACK PANT



POLO SHIRTS



YELLOW

POLO SHIRTS



BLUE

NAVY SHORTS



HOUSE COLOURS

| | | | |
|-------|----------|---------|--------|
| RED | GREEN | BLUE | YELLOW |
| HAWKS | KESTRELS | FALCONS | EAGLES |



WHITE SOCKS

SCHOOL BAGS WITH LOGO



12 INCHES BAG

LEGIONNAIRE CAP



BOOK BAG



12 x 15 inches

PE UNIFORM

ALL YEARS

UNISEX

POLO SHIRTS - All YEARS



RED



GREEN

POLO SHIRTS



YELLOW

POLO SHIRTS



BLUE

NAVY SHORTS



WHITE SOCKS



NAVY TRACK PANT



HOUSE COLOURS

| | | | |
|-------|----------|---------|--------|
| RED | GREEN | BLUE | YELLOW |
| HAWKS | KESTRELS | FALCONS | EAGLES |

www.threadsme.com



800-THREADS(8473237)

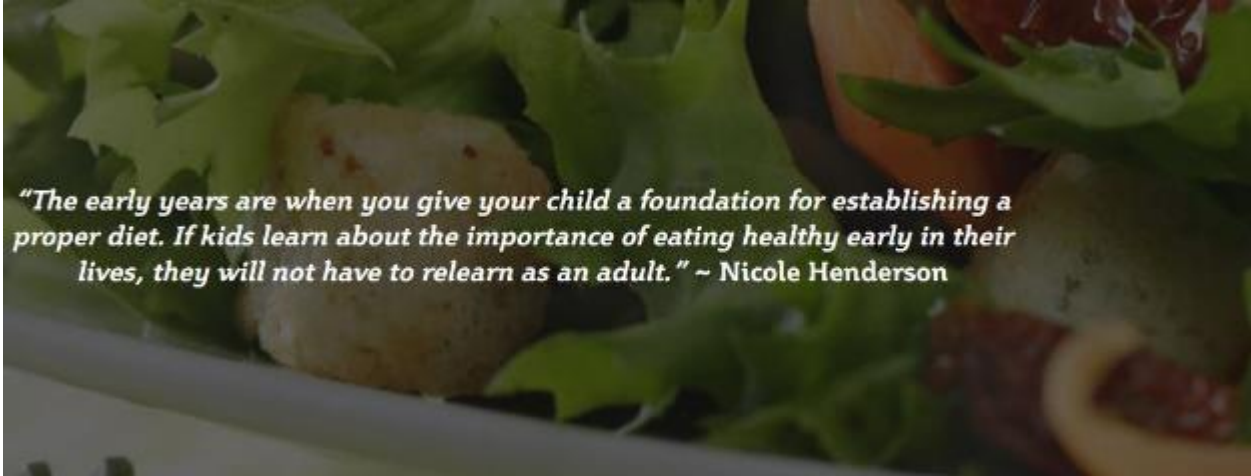
Parents

When dropping off/collecting your child from School, please can you respect the UAE Culture and dress in a conservative manner.



SCHOOL CANTEEN – SLICES

[Slices | School Food Experts](#)



Catering Fee Payment System

- All GEMS school children are automatically enrolled for the Slices Catering Fee Payment system upon school enrolment. Student details are updated upon enrolment
- Parents can access the Catering Fee Payment system via the GEMS Connect using the existing login details at <https://www.gems.ae/>
- The GEMS Connect enables parents to:
 - Top-up online using a debit or credit card, cash top-ups can also be completed in school at any of the Slices counters
 - Review their balances and top-up history
 - Monitor their child's usage
- The Catering Fee Payment system is accessible from the drop-down option of Fees
- Students will access the fund by using their student ID / STS card at the Point of Sale.
- The cashier will swipe their card for each transaction and their balance will be adjusted accordingly and updated on the GEMS Connect.

Menu

<https://acrobat.adobe.com/id/urn:aaid:sc:AP:4762c368-6c7d-4fc4-a81f-f84e0d4b3012>



GEMS Phoenix Classroom and Microsoft Teams Access

This is the website: www.gems.ae for accessing GEMS Connect and GEMS classrooms for parents, students and teachers. Please note, the OTP security code will be sent in your school registered parent email id from GEMS IT Helpdesk.

The password has to be RESET every term or within 3 to 6 months of the time for both GEMS parent and student user account using the below GEMS password Self-reset portal link. Please do not reset the password in MS Teams or in MS Office for the GEMS Student User account.

Student Username's password has to be created by the parent using the **GEMS password Self-reset portal link for both Parent & Student Username:** <https://selfreset.gemseducation.com/default.aspx>

Once the password has been created using the above link for the Parent's username, it can then be used to access GEMS Connect and GEMS classrooms.

Once the password has been created using the above link for the Student's username, it can then be used to access MS teams, GEMS classrooms and for School Wi-Fi.

To receive an OTP security code from GEMS IT help desk during the reset password process, please make sure the School registered Primary contact email ID is correct. If it is not correct nor requested to change the primary contact, please send the correct email ID of the Primary contact to the School registrar Ms. Anu - a.sreekumar_chs@gemsedu.com within 24 to 48 hours. The new email ID will be updated as the primary contact in the school systems.

For any additional support, please contact our SIMS and Phoenix Manager Frinson Francis - f.frinson_chs@gemsedu.com

